

## CITY OF MINEOLA REQUEST LISTING DECEMBER 14, 2020

Subject: **PREFERENCE FINAL TALLY RESULT FOR MEREDITH REQUEST FOR FY 2021**  
 From: **Mercy Rushing, City Manager**

Mayor and Council, I have calculated the Request for Meredith based on City Council's individual preference numbers: FROM 1- 7 (1 BEING MOST IMPORTANT AND 7 AS LEAST IMPORTANT), **SO THE LOWEST TOTAL NUMBERS WILL BE THE ONES WE LIST FIRST IN OUR REQUEST ENDING WITH THE HIGHEST TOTAL NUMBER LISTED LAST.**

<b>ITEMS SCORING BY CITY COUNCIL:</b>	<b>COUNCIL PREFERENCE</b>
<b>COUNCIL INITIAL</b>	<b>C G J M P S = TOTAL</b>

1. **POLICE DEPARTMENT --- Chuck Bittner, Chief of Police**  
 Vehicular Outfitting, Mobile Radio Equipment & Less than Lethal Force Option. See memo.  
 Request --\$78,000.00 2 3 1 2 1 2 = 11

2. **PUBLIC WORKS DEPT – William Crump, Director**  
 Mobile Emergency Safety Light Tower – See memo. Request --\$ 9,799.00 3 2 2 3 2 3 = 15

**MAIN ST. & HISTORIC PRESERVATION DEPT. – Doris Newman, Director**

3. Landmark Commission Request – Continue Iron Horse development phases. A walking trail, 20 historical signs with several interactive, several covered areas with seating and Photo Op sites. See memo/info. attached. Request-----\$66,912.00 4 1 4 5 4 1 = 19

4. Museum request for Operating funds. Request-----\$38,000.00 5 4 7 1 3 4 = 24

**PARKS & OPEN SPACES DEPT.– Mercy Rushing, Director**

5. Parks Advisory Board request to fund the building of an ADA family restroom facility at the Preserve Children's Playground area. See memo. Request-----\$35,500.00 1 6 6 4 5 7 = 29

**MAIN ST. & HISTORIC PRESERVATION DEPT. – Doris Newman, Director**

6. Main St. Advisory Board request funding to repair and restore downtown trash containers and to replace and add more garlands downtown for Christmas decorations. See memo. Request-----\$13,000.00 6 5 3 6 7 5 = 32

**PARKS & OPEN SPACES DEPT. – Mercy Rushing – Mercy Rushing, Director**

7. Parks Advisory Board request funding to replace current broken Windmill for Nature Preserve Attraction. See attach information. Request-----\$5,390.75 7 7 5 7 6 6 = 38

<b>PREFERENCE ORDER</b>	<b>REQUEST RECAP.</b>	<b>ITEM REQUESTED</b>	<b>TOTAL RATING</b>	<b>COS</b>
#1	Police Dept. – Vehicular Outfittings/Mobile Radios and Less than Lethal Force Option.		<b>11</b>	\$78,000.00
#2	Public Works Dept. – Mobile Emergency Safety Light Tower .		<b>15</b>	\$ 9,799.00
#3	Historic Preserv. Dept. – Iron Horse Walking Trail, Hist. Signs & Photo Op.		<b>19</b>	\$66,912.00
#4	Historic Preserv. Dept. – Museum Operating Funds		<b>24</b>	\$38,000.00
#5	Parks & Open Spaces Dept. – ADA bathroom @ Preserve playground		<b>29</b>	\$35,500.00
#6	Main Street Dept – Repair/restore trash containers & replace garlands		<b>32</b>	\$13,000.00
#7	Parks & Open Spaces Dept. – Replace broken Windmill at the Preserve		<b>38</b>	<u>\$ 5,390.75</u>
<b>TOTAL REQUEST</b>				<b>\$246,601.75</b>

## MEMORANDUM

**DATE:** November 16, 2020  
**TO:** Mayor & City Council  
**FROM:** Doris Newman, Main Street Manager/HPO  
**VIA:** Mercy Rushing, City Manager  
**SUBJECT:** Meredith request for Landmark Commission & Iron Horse Square

### **Landmark Commission & Iron Horse Square 2020 Request for Meredith Foundation:**

The Landmark Commission members approved in their regular October and November meetings requesting funds of \$67,000 for work on further phases of Iron Horse Square. The requests are:

A ½ mile walking trail (8' wide) \$34,012

20 historical signs (several to be interactive) \$13,900

3-4 covered areas with seating \$9,600

3-4 photo opportunity sites \$4,800

Pump car & hand car \$4,600

The walking trail would provide a historic, educational, recreational activity at Iron Horse Square for everyone at any time. The historical signs will tell more of our community's story as the public makes their way along the historical walking trail. The covered areas with seating would make the trail more enjoyable for a variety of folks of different ages and physical conditions. Strategically-placed photo "opps" are an excellent way of providing another fun and free photograph of time in Mineola while the pictures taken here would advertise our offerings to anyone who sees them. The pump car & hand car would also provide a rare hands-on learning experience and insight into an activity of a bygone day.

**Landmark Commission & Iron Horse Square request - \$67,000 for historical walking trail creation and material, signage, covered seating, photo opps signs, and pump car.**

## Proposed Request for Meredith Foundation from Landmark Commission 2021

½ mile asphalt walking trail (8' wide)	\$34,012
20 historical signs – (8 to 10 will be interactive)-	13,900
3 to 4 covered areas with seating -	9,600
3 to 4 photo ops -	4,800
Pump car & hand car -	4,600
<b>TOTAL REQUEST FOR 2021 -</b>	<b>\$67,000</b>

### Items broken down:

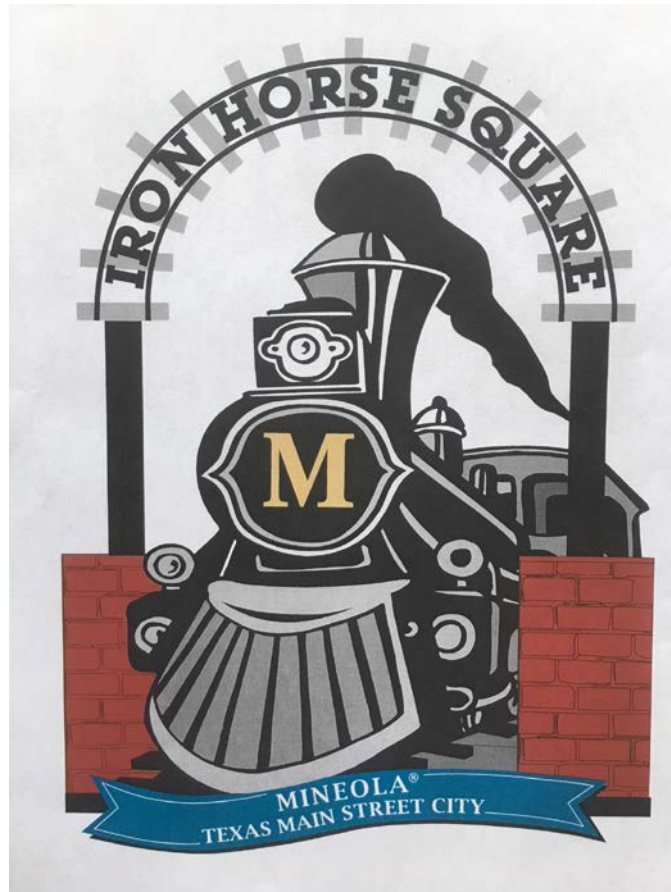
Signs – 4 at \$1200, 10 at \$500, 6 at \$200

Covered areas with benches - \$2400 each

Photo ops - \$1200 each

Pump car - \$2800, Child's hand car - \$1800

*Mineola Historical  
Landmark Commission*  
**Iron Horse  
Square**



**A Historical  
Railroad Park in  
Downtown Mineola**



*Mineola Landmark Commission  
P.O. Box 179  
Mineola, TX 75773*

Meredith Foundation  
P.O. Box 117  
Mineola, Texas 75773  
October 30, 2020

Dear Meredith Foundation Member,

As you know, the Mineola Landmark Commission has undertaken the ambitious creation of a railroad heritage plaza west of our Mineola Union Depot. We are proud to announce the work on the project is progressing at an ever-increasing pace. (see attachments) We have received donations, have applied for grants, and are currently conducting fundraisers for our project. During the coming year we could definitely use your help!

Currently we are on phase VIII of XII of our Iron Horse Square Project. We are requesting funding for our historical walking trail with interactive signage & intermittent shade coverings. Also we would like to be able to place a suitable surface coating on our designated parking areas and prepare the areas for proper drainage. We would like to purchase or build replicas of old time railroad pump cars for use when our train isn't running. Extension of our existing railroad track is also needed to begin the next phase of Iron Horse Square (track and crossties are already on hand).

We have outlined each aspect of our proposed request in the pages to follow so you can have a better understanding of the items for which we are asking and what we are trying to accomplish.

Iron Horse Square is shaping up to be a "one of a kind" attraction for the East Texas area! Our primary goal will always be the education of the public about the heritage the railroads have afforded us locally and nationally.

We appreciate everything the Meredith Foundation has done for the City of Mineola and look forward to working with you now and in the future on this very exciting project!

Sincerely,

**Mineola Historical Landmark Commission**

James R. Phillips – Chairman

Joyce (Alexander) Williams – Vice Chairman

Martha (Dear) Holmes – Secretary

Greg Hollen - Member

Crystal (Walton) Hudson - Member

Sue (Frank) Jones – Member

Mike Love - Member

Cleottice (Greer) Walton – Member

Cheryl (Hill) Wood - Member

Doris (Pfister) Newman – Director, Historic Preservation Officer

# Funds Requested from Meredith Foundation for 2021

## Projected Construction for Upcoming Year 2021.

### Phase VIII - Historical Walking Trail (one-half mile in distance) *Timeline 2020-'21.*

A ½ mile long foot path providing wheelchair accessibility will be constructed through Iron Horse Square. Along the foot path will be historical signage depicting the story of Mineola's railroad heritage. The path will begin near the covered common's area, track west to Stone Street, with parts of it on the actual abandoned railbed of the M&KT (Katy) Railroad, and back to the entrance.



### Historical Signage (interactive signage)

Historical signs will be posted alongside the entire walking path telling the story of Mineola's railroad heritage. The story will include the International and Great Northern Railroad, the Missouri Kansas and Texas Railroad, and the Texas and Pacific, Missouri Pacific, Union Pacific, & Amtrak Railroad companies. These signs will explain the history and impact of the railroad in Mineola & East Texas and how the Union Pacific Railroad Company is helping to ensure our railroading heritage will live on for many years to come.





## **Photo Op Areas**

These will provide park goers areas to take pictures



**Pump Cars** – Child size and adult pump cars will be built or purchased for use when the mini train is not scheduled to run or eventually as a separate attraction to the mini train. An additional track is planned. (Note: Track, cross ties and supplies are already on hand to build track – no additional funds are needed at this time)





### Child's Hand Crank Rail Car

Keep your kids busy for hours! Built for 7.25" and 7.5" Gauge Track





## *City of Mineola Landmark Commission*

### **Iron Horse Square**

#### **About the Park**

Iron Horse Square will be a five acre area in downtown Mineola that celebrates the railroad heritage of our city.

Situated between Front and Commerce Streets and alongside the Union Pacific Railroad tracks the plaza is a joint effort between the Landmark Commission, the Parks & Open Spaces Board, Mineola Main Street and the City of Mineola.

Iron Horse Square will provide a historically rich venue for local recreation, family activities, concerts, and cultural events.

#### Mission Statement

Iron Horse Square's mission is to celebrate the railroad heritage of the city of Mineola by stimulating cultural, economic and social activity within and around the park.

#### Overall Goals

- Construct a 15" gauge railroad track with a 36 passenger train.
- Construct a 14'x70' replica of the Mineola Engine House for storage & maintenance of mini train.
- Erect a 4' fence to provide a barrier between the Union Pacific tracks and Iron Horse Square park.
- Place a model train layout of 1930's Mineola & her railroads in the conference room of the depot for use during educational tours of the depot museum and park.
- Collect photographs of trains in Mineola & Mineola trainmen & interview Mineola area railroad men &/or families for a documentary named "Mineola - Glory Days of the Railroad."
- Erect a train themed playground near the existing pavilion.
- Construct a mini train depot/waiting area with ticket booth and restrooms.

- Construct a ½ mile walking path with historical railroad signage along the path
- Erect replica of M&KT Interlocking Tower to be used for souvenirs, concessions & observation area for railfans.
- Purchase or built a replica of a Railroad Business or Lounge Car to place in the park to be used for a museum/venue. The car will also be open for public viewing and small group meetings.
- Connect the park with the downtown area via a pedestrian bridge over the Union Pacific Railroad
- Host music, arts, and historical venues throughout the year

### **Goals: Short Term**

- Raise funds to complete the 4' fence between Iron Horse Square & Union Pacific Railroad by selling fence sections with plaques. (COMPLETED)
- Collect photographs of old Mineola, Mineola trains, and train-related artifacts for documentary & wall display.(COMPLETED)
- Create a donor board in the depot with nameplates of donors to Iron Horse Square (COMPLETED)
- Establish fundraisers to help purchase miscellaneous items for Iron Horse Square. (COMPLETED)
- Develop a website for Iron Horse Square (COMPLETED)
- Develop a Facebook Page for Iron Horse Square (COMPLETED)

### **Goals: Mid -Term**

- Placement of a model train layout in the conference room of the depot for display & use during educational tours of the Depot Museum and Park. (COMPLETED)
- Construct a 15" gauge railroad and train (1 engine & 3 passenger cars) inside of the walking path (COMPLETED)
- Construct a ¼ mile of railroad track using volunteer labor (COMPLETED)
- Construct a 14'x70' storage barn for our 36 passenger train. This will be a replica of the T&P roundhouse at the west Mineola yard. (COMPLETED)
- Erect a small train themed playground for children 2-12 years old. (COMPLETED)
- Interview area railroad men & women &/or their families for a documentary to be shown in the depot on our television. (First 10 interviews COMPLETED)
- Place benches, trash receptacles & water fountains in park. (COMPLETED)
- Place a large entrance sign for Iron Horse Square. (COMPLETED)
- Construct a waiting area/depot for our mini train passengers.
- Purchase a Railroad Business Car to remodel as an additional railroad museum/venue. Location to be near the old basketball court.
- Construct a ½ mile walking path with historical signage
- Erect interactive & educational signage for Historical Walking Trail
- Construct rail-themed photo op areas.
- Purchase hand cars & pump cars for use when mini train is not running.
- Construct a replica of the Commerce Street Park which was between the Union Depot & the Beckham Hotel. This will be in Beverly's Garden area.

- Erect replica of the MKT Interlocking Tower to be used for concessions/souvenirs & railfan viewing area.
- Connect the park with the downtown area via a pedestrian bridge over the Union Pacific Railroad

### **Goals: Lifetime of Park**

- Host music, arts, and historical venues throughout the year
- Educate visitors to the unique place the railroads have in the history of our country.
- Provide a safe and fun place for families to enjoy history, nature & cultural activities.

### **Accomplishments:**

- Laid out an overall concept plan complete with interactive concept map. (on display in the lobby of the Mineola City Hall)
- Received approval for Iron Horse Square from the Mineola City Council & the Parks & Open Spaces Board
- Met with Union Pacific representatives about feasibility of our plan.
- Received a \$120,000 original grant from the Meredith Foundation to purchase a 15" gauge train & rail.
- 36 passenger train purchased, construction completed & delivered to Mineola.
- Established the Harry Meredith Special Mini Train rides on the 2<sup>nd</sup> & 3<sup>rd</sup> Saturdays of each month, with runs from 11:00 a.m. until 4:00 p.m. Special Event Rides held on days of Mineola Festivals & Special Group Rides were held upon request.
- Received \$35,000 from Meredith Foundation to construct a display of 1930s Mineola & its railroads, to purchase a TV system to show a documentary of Mineola & its railroads & to remodel the depot conference room to hold the train display & photos.
- Completed construction of a small scale layout of the city of Mineola during the 1930's and its railroads and placed in the depot conference room, used for display and educational tours.
- Collected photographs and obtained maps of 1930's Mineola to be used by Red River Models to recreate a replica of downtown Mineola & her train tracks
- Toured over ½ dozen railroad museums & miniature railroads and received advice from their curators & operators.
- Collected photographs from local descendants of Mineola trainmen & placed on wall in depot model train room & used in a railroad documentary showing in Depot Museum.
- Contracted with TDC in Winnsboro for trustees to clear old Katy Railbed for future use by Iron Horse Square.
- Met with structural and civil engineer who took basic measurements for pedestrian bridge
- Received a \$5000 grant from Wood County Industrial Commission. 2016
- Additional \$1000 from Wood County Industrial Commission in 2017, \$4000 in 2018, \$3000 in 2019, \$3000 in 2020.

- Established a Landmark Commission “Movies in the Park” night as a fundraiser, using business & individual sponsor donations to provide free family entertainment for Mineola area families.
- Established a “Purchase a Fence Section & Plaque” with a \$500 donation to Iron Horse Square to raise money to complete the 4’ fence between Iron Horse Square and the Union Pacific Railroad. An additional 558” of fence was added to the original 336’ of fence.
- Contracted with WPC Services in Longview to engrave the fence plaques (design of each plaque is a railroad car)
- Contracted with Les Mitchell, a Mineola area potter, to create Mineola stoneware for the Landmark Commission to sell as a fundraiser. Many pieces of stoneware have been made & sold and funds earmarked for use.
- Created an Iron Horse Square sub-committee from Landmark Commission members and 1 member from each Mineola city board. This committee will function to involve all Mineola boards, Chamber of Commerce, etc. with Iron Horse Square activities.
- Received a gift from Bryan Steck of ETAS in Mineola to construct a replica of the Mineola Engine House in West Mineola to house our train and supplies.
- Contracted with GRH Creative Services to laser cut replicas of Mineola’s Union Pacific Depot, caboose & the T&P water tower to sell as a fundraiser.
- Established a Hobo Stew Fundraiser – to be held yearly on the Friday before the Iron Horse Festival.
- Helped establish The East Texas Railway Association. A newly formed group of cities in the East Texas area who have as their goal promoting railroad history and tourism.
- Established the East Texas Railroad Club based in Mineola – a group of model railroad enthusiasts who will maintain our model railroad display and encourage & educate our community & especially our young people about the hobby and history of model railroading.
- Developed a logo design for Iron Horse Square. We have had design printed on tee shirts and sell as a fundraiser.
- Developed an educational scavenger hunt for Mineola model train display in depot.
- Developed a website for Iron Horse Square – <https://ironhorsesquare.org>
- Developed a plan for ordering & selling train themed souvenirs during each train run.
- Ordered train themed donation structures to accept donations for Iron Horse Square.
- Established an annual “Christmas Train Rides at Iron Horse Square” complete with Christmas lights throughout the plaza with runs from 4:00 to 7:00 p.m. each Sat. in Dec. before Christmas.
- Established an annual “Halloween Train Rides at Iron Horse Square” complete with Halloween and Fall decorations throughout the plaza with 2 Sat. before Halloween rides and a Halloween evening ride. All rides were from 7:00 until 9:00 p.m.
- Established a very popular Easter Train Run complete with purchase of Easter Bunny outfit and photo opportunity for children. A St. Patrick’s Day run with Leprechauns was also very successful.
- Restructured the 2018 proposed depot/waiting area to include shaded area for train, engineer & patrons. Area will have public restrooms with air conditioning, a ticket booth, water fountain, fans, benches & a dividing fence between passengers and train.

- Erected a Texas & Pacific train themed playground with, artificial turf & 4 swings
- Erected a large entrance sign into Iron Horse Square.
- Contracted with a local engineer to lay out a conceptual drawing of depot/waiting area (his services were donated)
- Outfitted inside the railroad track area with underground electrical services for lights at Christmas, Halloween and similar displays.
- Several large train themed photo ops were completed and placed around the park.
- A 50' plate steel train cut out was purchased, sandblasted and powder-coated and placed on the actual railbed of the MKT (Katy) Railroad north of the basketball court area. Decals representing the Katy were printed and placed on the train cut outs. This will be decorated and lighted for Christmas & other holiday seasons.
- Created a running display of upcoming projects for Iron Horse Square (on static display at Mineola City Hall)
- Completed a vehicle crossing over the mini railroad.
- 20 trees were donated and set out by the Rotary Club of Mineola. Trees were placed along the railbed of the Katy Railroad. They will someday provide shade cover for pedestrians.
- 7 more trees were given by the Arbor Day Foundation to be placed near the playground and near the wooded walking area to provide a variety of trees. The Texas Forest Service was consulted on variety and location of trees.
- An additional tree (a Stephen F. Austin oak) was given to Iron Horse Square by the Mineola Public Library Annex. Tree was originally presented to library by the local DAR chapter.
- Completed 1920's period wooden water tower. Placed near MKT train silhouette.
- Ground was broken for historical walking trail. June 2020
- 5 additional fence plaques were purchased, bringing total purchased to 71.
- Many additional items were donated to our Depot Museum & Iron Horse Square park area including - a vintage 6' metal railroad crossing sign, a T&P builders' plate found in a pasture in West Mineola, numerous T&P, UP & Amtrak lapel pins, timetables, buttons, etc., an MKT lantern, UP silver service, Pullman silver bowl.
- A \$3000 grant was written and obtained from Wood County Economic Development Commission
- A Texas Railroad History website took notice of our efforts at Iron Horse Square & published additional researched information about Mineola's Interlocking Tower #62
- Concrete pad was poured for Mini Train Depot Waiting Area. - Aug. 2020
- Display was purchased and erected displaying Mineola's Sanborn Fire Insurance Maps in the Depot Museum. Maps are from 1887-1928. Aug. 2020
- Road signs were designed and purchased directing vehicular traffic & pedestrians to Iron Horse Square. Aug. 2020
- Our sign introducing Iron Horse Square was designed and ordered. It will be the first sign to be placed alongside the historical railroad walking trail. Aug. 2020
- The Wood County teacher society, Delta Kappa Gamma donated a Little Free Library, complete with train engine library, concrete pad, children's bench & awning to Iron Horse Square (pad poured Aug. 2020)

- Gipsy & Bob Schneider donated Bob's entire train memorabilia collection to Iron Horse Square to sell for profit with all proceeds going to Iron Horse Square. (Most items were Santa Fe, B&O, etc. Items belonging to UP, MoPAC were retained by our Depot Museum)
- Funds were donated to Iron Horse Square by Joe Moore to purchase a children's coin operated engine. The ride will be placed downtown to help raise funds for Iron Horse Square. (Sept. 2020)
- Ghost Stories & Train Rides???? (Oct. 2020)
- Christmas Train Rides ??? (Dec. 2020)

## Phase Outline for Iron Horse Square

Phase I – 15” gauge Union Pacific mini train & train barn (replica of Mineola’s 1930s engine house) Lay ¼ mile of 15” gauge track
Phase II – Sold fence sections & plaques to raise money for additional fence between park & RR tracks
Phase III - Depot Conference Room Remodel, Construction of Model RR with Replica of 1930s downtown Mineola, put together slideshow/documentary of Mineola railroad men, photos of trains in Mineola & railroad memories (interviews) from Mineola railroaders, their spouses &/or their children.
Phase IV – T&P railroad themed playground
Phase V – Entry sign for Iron Horse Square, children’s photo ops, trash receptacles, benches for Iron Horse Square
Phase VI – replica of MKT train, replica of railroad water tower, directional signage to IHS
Phase VII – depot/waiting area with ticket booth & restrooms
Phase VIII – walking trail, historical & interactive signage, & parking areas designated & graveled. Also purchase of pump cars & extension of railroad tracks.
Phase IX – Replica of Mineola Interlocking Tower #62 construction. (2 <sup>nd</sup> floor observation deck, 1 <sup>st</sup> floor – possibly concessions & souvenirs, recreate smaller version of Commerce St. Park in Beverly’s Garden
Phase X – purchase or build a railroad car to serve as a museum annex, meeting area, and/or concession area, etc. (Put car near existing concrete pad & place cover over entire pad)
Phase XI – cover existing concrete pad where BB court used to be, add picnic tables, stage, etc.
Phase XII – pedestrian crossover





## City of Mineola Landmark Commission

# IRON HORSE SQUARE PROJECT

"a historical plaza downtown"

<https://ironhorsesquare.org>

### Structures Previously in Place

#### Amtrak Depot

Located to the immediate west of U.S. Highway 69 and between Front & Commerce streets is the old Union Depot which serves as an Amtrak passenger station and as a small railroad history museum. The station has a passenger waiting area, an office area, restroom facilities, a railroad artifact area and a conference room. The depot was remodeled in 2005 and rededicated in 2006 with its exterior having been restored to its original 1906 design.

The multimodal depot is now known as the Mineola Transportation Plaza and won the "Best Building Restoration" award from the Texas Downtown Association in 2006; the city leases the property from the Union Pacific Railroad.



#### Covered Commons Area

Located approximately 50' west of the depot is a 30x60 open commons area with cement flooring and seating around the perimeter. When not in use this area will serve as an additional waiting area/gathering place for our train passengers.



## Structures & Attractions Added Beginning 2018

### Phase I – 15" Gauge Train and Track - 2018 (1 engine & 3 passenger cars w/seating for 36)

A 15 inch gauge replica of a Union Pacific train has been built by Swanee River Railroad Company in Lufkin, Texas. The train will run ¼ mile around the area known as Beverly's Garden (see rendering below). Railroad tracks were laid using the volunteer labor of Mineola area men, women, boys & girls.



### Train Storage Facility - 2018 (replica of old roundhouse in Mineola train yard)

Materials donated by Brian Steck – ETAS Building of Roofing Systems of Mineola.

## Rendering of Iron Horse Square



## Phase II - Boundary Fence & Plaques - 2018 (4' high x Total 884' long)

An additional 552' has been added to the existing 4' x 332' pipe tubing fence. Name plaques were sold for a \$500 donation to Iron Horse Square to raise money to purchase the fence. Additional fenced areas will possibly be around the playground, around the tin pump house and alongside the loading ramp for the train.



## Phase III - Model Train Display – Left - 1930s Replica of Downtown Mineola and Railroads. -- 2018

&

## Right - Wall Display of Photos of Trains in Mineola & Mineola Trainmen - 2018



Sign Above Model Train Display - 2019



Donor Board with name plates of donors to Iron Horse Square - 2019



Glory Days of Iron Horse Documentary -2019

Photos of trains and trainmen in Mineola, playable remotely on a large TV inside the Depot Museum. Over 100 photos have been collected to date. Some are "never before seen photos" of trains and trainmen in Mineola.

Mineola Railroad Personnel Interviewed by professional videographer – First group of 10 men and women are presently being edited.

# MINEOLA GLORY DAYS OF THE IRON HORSE



Weldon Greer (born in 1924) being interviewed by County Road Film Company.

## Phase IV - Playground - 2019



## Phase V - Entrance Sign to Iron Horse Square -2019



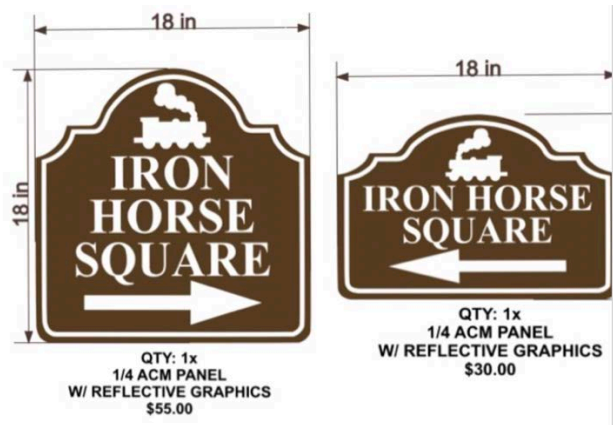
**Benches, Trash Receptacles, Photo Ops - 2019**



**Phase VI – Replica of MKT Train 2019 & Replica of Water Tower – Feb. 2020**

**Roadside signage & beginning of Historical Walking Trail Signage – Aug. 2020**





## Roadside directional signage

# Iron Horse Square

"Where History and Education meet Recreation"

Est. December 12, 2018



The City of Mineola Landmark Commission planned the Square as part of its historical preservation and education goals. The Commission partnered with the City of Mineola, Mineola Economic Development Corporation, the Meredith Foundation and the Parks and Open Spaces Board.



This five-acre area tells the story of the railroad heritage of our city, County, and East Texas. It provides a local historical venue for recreation, family activities, concerts, and cultural events.



This site is located between Front and Commerce Street and U.S. Highway 69 and Stone Street. The Square's mission is to celebrate the railroad heritage of Mineola, Wood County, and the surrounding area through cultural, economic, and social activities.



"Developmental History of Iron Horse Square"

1<sup>st</sup> day of work on walking trail.

sign. Sign denotes major partners & contributors in the development of Iron Horse Square.

**Introductory Sign was completed with funding from Wood County Economic Development Corporation**

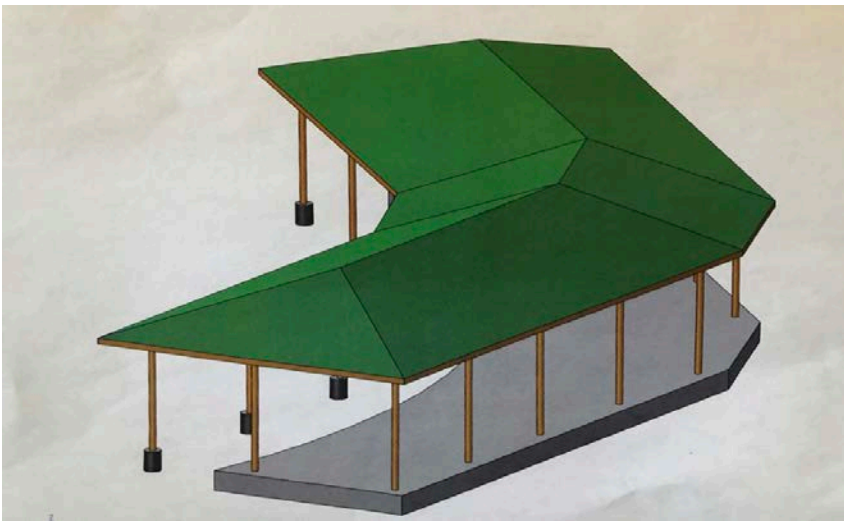
Bladed the Path.

**(Wood Co. Commissioner Jerry Gaskill donated regrid for trail &/or parking area.**

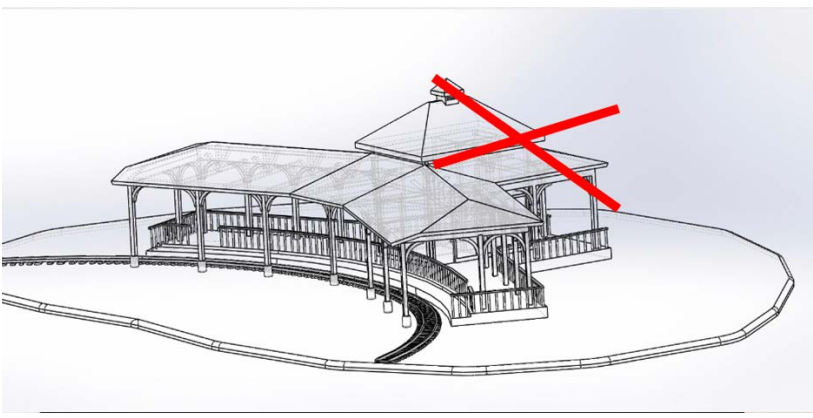
**Phase VII - Depot/Waiting Area – Projected Timeline for Phase VII – 2020-21** - The depot

will be located on the eastern-most curve of the track. Under the cover of the depot will be waiting passengers, boarded passengers & driver. Fans and lights will be above our waiting guests & passengers. ADA accessibility will be on the south end of the depot.

**NOTE:** Due to lack of funding we had to dispense with the portion of the depot that housed the ticket booth and restrooms. We plan to add that portion when funding becomes available.



Redesigned depot/waiting area



Ticket booth & restrooms will be added when funds become available



# **Funds Requested from Meredith Foundation for 2021**

## **Projected Construction for Upcoming Year 2021.**

### **Phase VIII - Historical Walking Trail** (one-half mile in distance) *Timeline 2020-'21.*

A ½ mile long foot path providing wheelchair accessibility will be constructed through Iron Horse Square. Along the foot path will be historical signage depicting the story of Mineola's railroad heritage. The path will begin near the covered common's area, track west to Stone Street, with parts of it on the actual abandoned railbed of the M&KT (Katy) Railroad, and back to the entrance.



### **Historical Signage (interactive signage)**

Historical signs will be posted alongside the entire walking path telling the story of Mineola's railroad heritage. The story will include the International and Great Northern Railroad, the Missouri Kansas and Texas Railroad, and the Texas and Pacific, Missouri Pacific, Union Pacific, & Amtrak Railroad companies. These signs will explain the history and impact of the railroad in Mineola & East Texas and how the Union Pacific Railroad Company is helping to ensure our railroading heritage will live on for many years to come.



## Photo Op Areas

These will provide park goers areas to take pictures



**Pump Cars** – Child size and adult pump cars will be built or purchased for use when the mini train is not scheduled to run or eventually as a separate attraction to the mini train. An additional track is planned. (Note: Track, cross ties and supplies are already on hand to build track – no additional funds are needed at this time)



## Projected Future Facility Construction

### Phase IX - Replica of Interlocking Tower #62 - Timeline: 2021-2022

The tower will serve as a concession and souvenir area and as a location for railfans to watch the trains along the Union Pacific tracks.

A replica of Mineola Interlocker #62, possibly built in 1887 and authorized by the Texas Railroad Commission in 1905, and quite probably one of the first interlockers constructed in the state of Texas, will be built by a local builder.

Procurement of switch levers, switches, pipes and rollers to bring the inside of the tower to true historical replication will be a top priority.



Mineola Interlocking Tower (Date on Earl Aldredge's painting of the tower located in Mineola Memorial Library is Dec. 9, 1887) The above photo was found in the basement of the Chamber of Commerce in May 2015.

### Phase X - Railroad Car. Timeline: 2022-2023

A railroad car will be purchased and remodeled to accommodate a display of railroad related items, to serve as a venue and as a meeting location for local clubs, boards, etc.



## **Phase XI – Cover Existing Concrete Pad Where BB Court Used to Be.**

### ***Timeline 2023-24***

A roof will be constructed over the old BB court concrete pad and new railroad car. Picnic tables will be placed under the new pavilion and the railroad car will be placed west of the pad. It will be under the same roof structure as the concrete pad. Intended uses of railroad car: Railroad museum annex, meeting area (possibly to rent out to service clubs or for birthday parties), concession stand, souvenir booth.

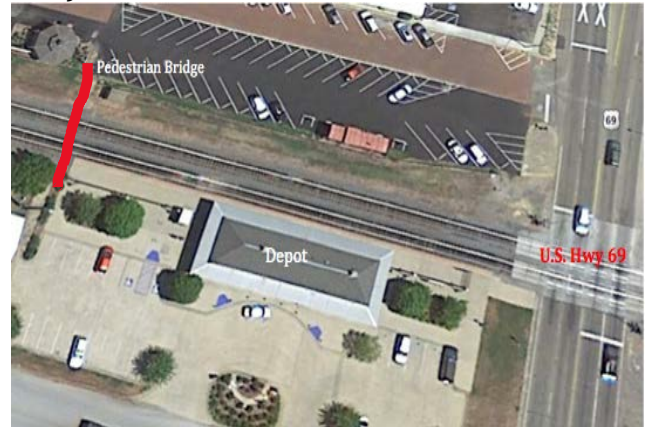


## **Phase XII - Pedestrian Bridge over Union Pacific Railroad (12'x75') Timeline: 2024-'26**

A foot bridge over the Union Pacific Railroad connecting Commerce Street parking with the Railroad Park will be added to allow foot traffic and bicycle traffic safe access to the depot and the railroad park. This foot bridge will also benefit Amtrak passengers waiting for their train. It will allow them to safely cross over the railroad tracks to dine and/or shop in Mineola and to return to the depot in time to board their train. Access to the bridge will be switch-back ramps leading to the main bridge. The foot bridge will be a truss design. The only means at present for foot traffic to cross from Union Depot and Iron Horse Square is to walk over the Hwy 69 crossing (a major U.S. highway with heavy traffic).



Our truss design will be similar to this.



Pedestrian crossing (gazebo to depot)

## MEMORANDUM

DATE: November 9, 2020

TO: Mayor White & City Council  
VIA: Mercy Rushing, City Manager

FROM: William Crump, Public Works Director

SUBJECT: Meredith Request- Emergency Light Tower

### **Mineola Public Works Department**

The Mineola Public Works department is requesting to purchase a mobile emergency light tower. This light tower will be used for lighting our work area when working on emergency water leaks, and sewer main breaks at night. This light tower will help provide a safe work environment for City employees working at night. The cost for this light tower is \$ 9,799.00 Please see attached information.



## Generac Magnum MLT3060MV Mobile Portable Light Tower — 6000 Watts, Mitsubishi Engine, Electric Winch, Vertical Mast, Model# 6972

Item# 53889

(0) [Write a Review](#) [Ask a Question](#)

**Only \$9799.00**

Easy Financing Available | [Learn More](#)



### Ship It

Factory Shipped —

Estimated Delivery: 32 - 34 Business Days

- Marathon 6000 Watt generator with 120V and 240V outlets
- 30ft. all-steel mast with adjustable 360° rotation
- Four 1,000 Watt metal halide lights
- 4-point outrigger stance withstands 65+ MPH winds
- Lockable cabinet

### Product Summary

The Generac Magnum MLT3060MV Mobile Portable Light Tower delivers outstanding illumination plus a 6000 Watt generator. The 30ft. mast features adjustable 360° rotation and four 1000 Watt metal halide lights to illuminate up to 7 acres. This rugged light tower also features a full tubular steel frame trailer with DOT running light package.

### What's Included

(1) Mobile portable light tower

### Features + Benefits

- Marathon 6000 Watt generator with 120V and 240V outlets
- 30ft. all-steel mast with adjustable 360° rotation
- Four 1,000 Watt metal halide lights
- 4-point outrigger stance withstands 65+ MPH winds
- Lockable cabinet

### Key Specs

Item#	53889	Generator Brand	Marathon Electric
Brand	<u>Generac</u>	Generator Type	Brushless
Manufacturer's Warranty	2 year commercial limited	Output Voltage	120/240 single phase
Ship Weight	1694.0 lbs	Acres Covered	5-7
Output - Standby kW	6	Fuel Tank Capacity	30 gal
Lumen Output	440,000	Max. Run Time (hrs.)	64
Light Type	(4) 1,000 watt metal halide	Max. Extended Height (ft.)	30
Engine Brand	Mitsubishi	Dimensions L x W x H (in.)	117 x 58 x 111
EPA Tier	Final 4	Product Weight (lbs.)	1,694
Peak HP	12.2		
Operating RPM	1,800		

### Compare with Most Popular Mobile Light Towers

## **MEMORANDUM**

**DATE:** November 16, 2020  
**TO:** Mayor & City Council  
**FROM:** Doris Newman, Main Street Manager / HPO  
**VIA:** Mercy Rushing, City Manager  
**SUBJECT:** Meredith request for Museum

### **Museum 2020 Request for Meredith Foundation:**

The Mineola Historical Museum Board is requesting funds for operating expenses for the Mineola Historical Museum in the same amount as last year, \$38,000. Accomplishments there include adding an exhibit featuring the restored Collins sign that includes new wiring and a faux brick-painted wall; inventory of the entire museum; photo inventorying of every exhibit and individual items; provision of scanned copies of historic Mineola to Autumn Wind assisted living for residents; acquired custom bookshelf for Mineola High School exhibit; designed new exhibit on Mineola Fire Department; acquired Dr. Scott's dental equipment; painted fence on east perimeter between barbershop and Santa House; placed half page ad in Best Western Directory; moved and cleaned all 20 glass display cases and alternated some exhibit items; added electrical outlets to roof for expanded Christmas display; displayed inspirational sign due to COVID since April; added a half wall along north window and much more.

**Museum request - \$38,000 operation expenses**







# COLLINS





IN OUR HISTORY, AMERICA HAS  
OVERCOME MANY ADVERSITIES  
TO BECOME STRONGER AND  
MORE RESILIENT.  
**WE WILL DO IT AGAIN!**

## MEMORANDUM

**DATE:** November 16, 2020  
**TO:** Mayor White and City Council  
**VIA:** Mercy Rushing, City Manager  
**SUBJECT:** Meredith Request FY 2021-City Council Meeting

**Background Information:** As Chief of the Mineola Police Department I hereby submit the 2021 Meredith Foundation proposal for your review, approval, and subsequent advancement to the Mineola City Council. My requests this year are best described as crucial departmental needs in officer safety equipment. Attachments (7 pages) will accompany this petition further detailing the items. Should you have questions beyond the scope of what is provided, your inquiries are always welcome.

- (1) **VEHICULAR OUTFITTING:** At the end of budget year 2020 the city allocated monies to purchase three new vehicles. The purchase was for factory stock vehicles. At this time I am requesting funds to outfit two of the three vehicles at a cost of \$28,000 per vehicle. Detailed itemization for ONE vehicle is attached. Please note total cost will be times two, totaling \$56,000.
- (2) **MOBILE RADIO EQUIPMENT:** I am also requesting additional radio equipment to outfit the one additional new vehicle plus three seized vehicles that the Criminal Investigations Division uses. The cost to outfit the vehicles with Motorola APX 4500 are \$4,000 each, installed, for a total of \$16,000 for radio equipment.
- (3) **LESS THAN LETHAL FORCE OPTION:** The goal for this safety equipment package is to outfit all patrol vehicles with a less than lethal option at the officers' discretion. This would make it readily available in the use of force options and would give the officer an additional means to handle a volatile situation. All officers are currently trained and certified to use the less than lethal use of force weapon. With the purchase of 10 Remington 870 less lethal bean bag guns each patrol vehicle would contain a less lethal weapon, readily accessible at all times if needed. 100 rounds less lethal ammunition @ \$5.00/round, \$500. Ten less lethal weapons \$5,500. Total of \$6,000.

Total for all items requested by Mineola Police Department. \$78,000

Thank you for your thoughtful consideration of these legitimate and urgent requests and I kindly ask that all are approved in their entirety, as submitted above.

**MAL Technologies Fleet**  
 4172 State HWY 19 South  
 Sulphur Springs, TX 75482 US  
 +1 2145491830  
 accounts@maltechnologies.com



**ADDRESS**  
 MINEOLA POLICE DEPT

**Estimate 1069**

**DATE 10/12/2020**

**EXPIRATION DATE 01/15/2021**

**MAL TECH REPRESENTATIVE**  
 Jay Sanders

**REPRESENTATIVE EMAIL**  
 jay@maltechnologies.com

ACTIVITY	DESCRIPTION	QTY	RATE	AMOUNT
21TR 52" PICK 4	21TR LIGHTBAR, DUAL COLOR	1	1,100.25	1,100.25
Z3SXP-1 PICK 4	Z3 DUAL TONE MATRIX CONTROLLER	1	735.75	735.75
C3100U PICK4	100 WATT SIREN SPEAKER	1	135.00	135.00
C3100U	100 WATT SIREN SPEAKER	1	148.50	148.50
Miscellaneous	LUND CONSOLE PACKAGE INCLUDES: CONSOLE, BASE, DUAL CUP HOLDER, MIC HOLDER, ARM REST AND PEN BOX	1	853.75	853.75
Miscellaneous	GO RHINO LIGHT INTERGRATED PUSH BUMPER / TEXTURED	1	386.44	386.44
MR6MC R/W PICK 4	RED/WHITE MULTI-COLOR LIGHT FOR PUSH BUMPER	2	85.90	171.80
MR6MC BW	MULTI-COLOR BLUE/WHITE FOR PUSH BUMPER AND UNDER MIRROR	3	94.49	283.47
Miscellaneous	GO RHINO PUSH BUMPER WRAP	1	329.21	329.21
Miscellaneous	GO RHINO WINDOW GUARDS	1	184.64	184.64
Miscellaneous	GO RHINO DOOR PANELS	1	216.50	216.50
Miscellaneous	GO RHINO PARTITION W/ SLIDING WINDOW	1	446.69	446.69
Miscellaneous	GO RHINO TRANSFER KIT	1	137.15	137.15
Miscellaneous	GO RHINO RECESSED AND EXTENSION PANELS	1	163.46	163.46
5SUVTH1511	5SUVTH1511	1	1,189.45	1,189.45
ULTMC RW	THIN MOUNT MULTI-COLOR RED/WHITE FOR FORWARD MIRROR MOUNT	1	75.60	75.60
ULTMC BW	THIN MOUNT MULTI-COLOR BLUE/WHITE FOR FORWARD MOUNT	1	75.60	75.60
FSM-BKT-TH	FRONT MIRROR BRACKET	1	24.23	24.23
BSM-BKT-TH	BSM-BKT-TH	1	26.99	26.99

Please Make All Checks Payable To  
 MAL Technologies Fleet  
 1150 E Eldorado Parkway  
 Suit 100  
 Little Elm, Tx 75068

ACTIVITY	DESCRIPTION	QTY	RATE	AMOUNT
PBV45	VERTICAL 45 BRACKET FOR PUSH BUMPER INTERSECTION	1	45.60	45.60
ULTMC R/B	THIN RED/BLUE LIGHT FOR QUARTER GLASS AND LP BRACKET	4	75.60	302.40
TRXWIND	WINDOW BRACKET	2	30.52	61.04
MICROPAKDC RB	RED/BLUE FLUSH MOUNT FOR "D" PILLAR	2	67.50	135.00
CITTH15T-RBA-MTC-CM PICK 4	CODE 3 REAR SPOILER LIGHTS W/ TA	1	884.21	884.21
Miscellaneous	STALKER DUAL SL	1	2,480.50	2,480.50
MR6LPBKT-H	LICENSE PLATE BRACKET	1	31.31	31.31
Miscellaneous	LED SPOTLIGHT REPLACEMENT	1	154.00	154.00
Miscellaneous	MAGNETIC MIC	1	36.70	36.70
Miscellaneous	TREMCO	1	179.52	179.52
GK10342UHKSSCAXL	DUAL HANDCUFF GUN LOCK	1	462.11	462.11
Miscellaneous	MOTOROLA APX 4500	1	3,737.94	3,737.94
Miscellaneous	WATCHGUARD 4RE VISTA WiFi DOWNLOAD	1	6,175.00	6,175.00
Miscellaneous	ESTES WEAPONS LOCKER	1	1,073.25	1,073.25
Miscellaneous	ESTES AUXILLARY DRAWER	1	240.95	240.95
Miscellaneous	ESTES TAHOE RISER MOUNT	1	151.27	151.27
SHOP LABOR	SHOP LABOR	26	100.00	2,600.00
Miscellaneous	GRAPHICS	1	1,783.00	1,783.00
SHOP LABOR	SHOP LABOR FOR GRAPHICS	2	100.00	200.00
MR6MC RW	MULTI-COLOR RED/WHITE FOR UNDER MIRROR	1	94.49	94.49
SHIPPING	SHIPPING	1	400.00	400.00

THIS WIL BE PER VEHICLE.  
SORRY FOR THE DELAY.

**TOTAL \$27,912.77**

Accepted By

Accepted Date

Please Make All Checks Payable To  
MAL Technologies Fleet  
1150 E Eldorado Parkway  
Suit 100  
Little Elm, Tx 75068



GT Distributors - Austin  
 P.O. Box 16080  
 Austin TX 78761  
 (512) 451-8298 Ext. 0000

Quote	QTE0126921
Date	8/28/2020
Page:	1

**Bill To:**

Mineola Police Department (TX)  
 PO Box 179  
 Attn: Accounts Payable  
 Mineola TX 75773

**Ship To:**

Mineola Police Department (TX)  
 PO Box 179  
 Attn: Accounts Payable  
 Mineola TX 75773

Purchase Order No.	Customer ID	Salesperson ID	Shipping Method	Payment Terms	Reg Ship Date	Master No.
LESS LETHAL	003781	RA	FACTORY DIRECT	NET 30	0/0/0000	2,210,765
Quantity	Item Number	Description	UOM	Unit Price	Ext. Price	
5	RA-4441*	Remington 870-RS-Park-Orange Stocks  Delivery: Approx. 120 Days	EA	\$538.96	\$2,694.80	

All returns must be authorized by GT Distributors. Interest charges on past due invoices at the maximum rate allowed by law.

Your salesperson is Dave Napier. Thank You.

Subtotal	\$2,694.80
Misc	\$0.00
Tax	\$0.00
Freight	\$50.00
<b>Total</b>	<b>\$2,744.80</b>







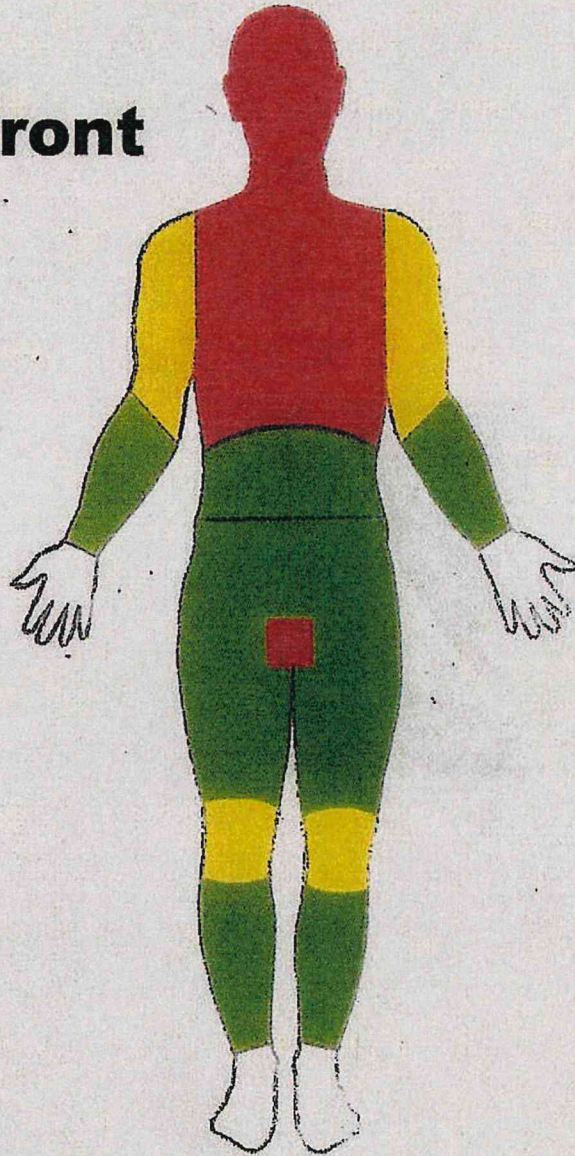
[View Image Gallery](#)

With so many controversial shooting deaths involving law enforcement personnel, a

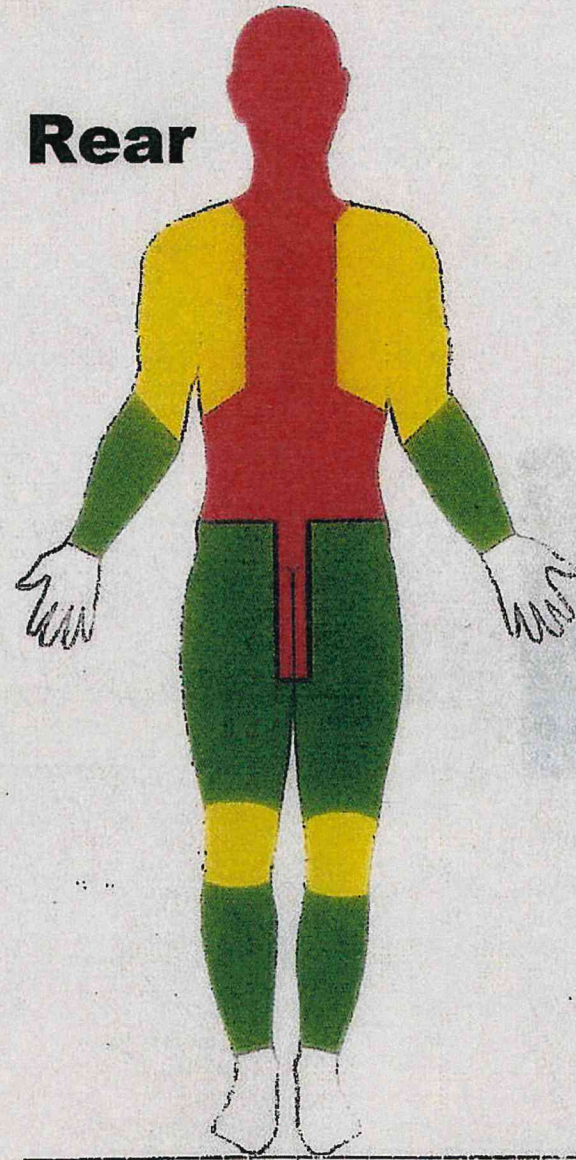


# Less Lethal Target Zones

**Front**



**Rear**



 **Primary**    **Secondary**    **Potentially Lethal**

Less Lethal  
Bean Bag Round

Bean Bag  
Gun

Bean Bag  
Bullet

Non-Lethal  
Guns Bean Bag

12 Gauge Bean Bag  
Rounds

Bean Bag  
Shotgun



**Defense Technology Bean Bag Round 12 Gauge Ammunition 1 ...**

**5** Cheaper Than Dirt | 800 ...

Visit site Pages

Image sizes

Image may be subject to copyright.

Similar images



Visual Search

Save

Share

More



Feedback

## MEMORANDUM

**DATE:** November 20, 2020  
**TO:** Mayor White and City Council  
**FROM:** Mercy Rushing, City Manager  
**SUBJECT:** Meredith Request FY 2021 – Parks & Open Spaces  
(Restroom Project for Nature Preserve Playground Area)

### **Background information:**

September 2015 the City of Mineola relocated and expanded the Children's Playground Area at the Mineola Nature Preserve. This came about due to requests from parents who frequently took their children to our preserve to play outdoors and have picnics with their family. Our original playground was by the other side of the Pavilion which also housed our one and only restroom facilities. Our equipment were very old and limited and we could not find any replacement to fix what we had so we heard that Tyler Parks dept., was going to purchase new playground equipment and will no longer need their old equipment. So the City contacted the City of Tyler and we made a deal to take apart all their equipment if they would give to our City. The Tyler City Council agreed and we got all their equipment which were in pretty good shape. We hired a professional playground consultant who helped our Public Works Director to plan and engineered a new playground and repurpose the ones we took from the city of Tyler's Park. Thanks to fundraiser efforts through Kacey Musgraves Concert we were able to fund the materials and labor (from consultant) in completing our much larger and newer playground for our Nature Preserve Park. However at this time we felt we did not need a restroom facility, we were thinking people would walk to the facility by the Pavilion. It was not long, that our citizens and guests were asking for restroom facility due to their kids needing it right away, or and too far for their grandparents or great grandparent to walk over to the Pavilion. We also were running into issues, where we had the Pavilion rented for family reunions, weddings and other events were taking place at the Pavilion and children and adults would come along and use the restrooms facility while their event is going on.

The Parks board contacted 3 local builders to give us cost and drawings for a restroom facility for the playground area and the board voted on the plans and probable cost that Mr. Glen Thurman provided attached with this memo. The Parks & Open Spaces Advisory board at their regular meeting voted unanimously to ask Mayor and City Council to include this project to be submitted as a project to the Meredith Foundation for their consideration.

**Project total probable cost is \$35,500.00**

# City Of Mineola

## Restroom Facility Project For Mineola Nature Preserve Playground Area.



Split face concrete block construction. Metal roof. Metal entry door. Interior to be ventilated. Fixtures to be all ADA compliant. All dimensions to be verified and certified ADA compliant. Concrete foundation. Two toilet with Privacy surrounds. One Partition for washing station from lavatory. Not shown, electric forced air hand drier. Lighting to be LED.

This drawing and cost assumptions given by Glen Thurman, Local Builder Mineola TX.

MERCY'S VENDOR LIST

	A	B	C
1	<b>Project Cost Analysis - By Glen Thurman</b>		
2	<b>Restroom Facility - Playground Area</b>	<b>OCTOBER 2020</b>	
3	<b>ITEM</b>	<b>PROBABLE COST</b>	<b>NOTES</b>
4			
5	Plumber	\$2,200	
6	Septic System	\$9,000	Aerobic System
7	Waterline	0	City will Install
8	Slab	\$3,000	
9	Plumbing fixtures	\$2,500	
10	Electrical	\$5,000	
11	Entry door	\$800.00	
12	Hand rails	1,200.00	
13	Blocks	\$2,000.00	
14	Cement	\$300.00	
15	Mortar sand	\$500.00	
16	Roof lumber	\$2,500.00	
17	Metal roofing	\$800.00	
18	Sheetrock	\$200.00	
19	Carpenter labor	\$2,000.00	
20	Roofing labor	\$1,000.00	
21	Masonry labor	\$2,500.00	
22	Clean-up	0	City take care of clean-up
23			
24			
25			
26	<b>Total Cost</b>	<b>\$35,500.00</b>	
27			
28			
29			
30			
31			
32			
33			
34			
35			
36			
37			
38			
39			
40			
41			
42			
43			

## Windmill Bid

**Gary Sims  
Alba/Golden**

For: Windmill Repair and Service

### Blades Repair & Service

Blade Sector	\$ 180.00	per section
Oil & Greese	\$ 20.00	
Shipping	\$ 20.00	per section
Lift	\$ 400.00	
Labor	\$ 500.00	
Maintenance Only	\$ 1,860.00	

### Repair

Windmill #707 Kit	\$ 2,000.00
Oil & Greese	\$ 20.00
Shipping	\$ 50.00
Lift	\$ 800.00
Labor	\$ 1,200.00
	<u>\$ 4,070.00</u>

<u>Replace Windmill</u>	<u>\$ 3,570.75</u>
Oil & Greese	\$ 20.00
Shipping	\$ 100.00
Lift	\$ 400.00
Labor	\$ 800.00
Subtotal	\$ 4,890.75
Add Gear Box & Break Handle	\$ 500.00
<b>Total Replacement Cost</b>	<b>\$ 5,390.75</b>

The windmill at the Preserve was installed in either 2010 or 2011 and was an old windmill purchased and delivered from South Texas. The cost to repair is nearly as much as it would cost to replace it. Also, the windmill will require bi-annual maintenance. To service the windmill, a lift will have to be rented. The City would like to preserve this feature as it has become an icon associated with the Preserve that visitors come to see and photograph.

